



- + Nexus™ Station
- + Nexus™ Software

# **Nexus™ Technology Solutions** **for TransLogic®** **Pneumatic Tube Systems**



### Nexus Station

The Nexus station delivers efficiency by automating more of the user's workflow than traditional stations. The queueing functionality removes carrier management bottlenecks for both send and receive operations.

## Nexus™ Pneumatic Tube Station

### User Benefits

- Carrier queueing enables efficient user workflow
- Simplified and easy to access secure payloads
- Secure transactions support assures medication safety and traceability
- Quiet “patient-sensitive” operation
- Station touch screen enables:
  - Special carrier send function keys including secure, STAT, and slow send
  - Security controls limit access to authorized staff members
  - Full integration with Swisslog Healthcare chain-of-custody solutions
- Easy to clean surface (including carrier chambers) promotes infection control
- Designed to support quick station modernization with minimal disruption and downtime
- Station upgrades are handled by your trusted Swisslog Healthcare Field Service Engineer

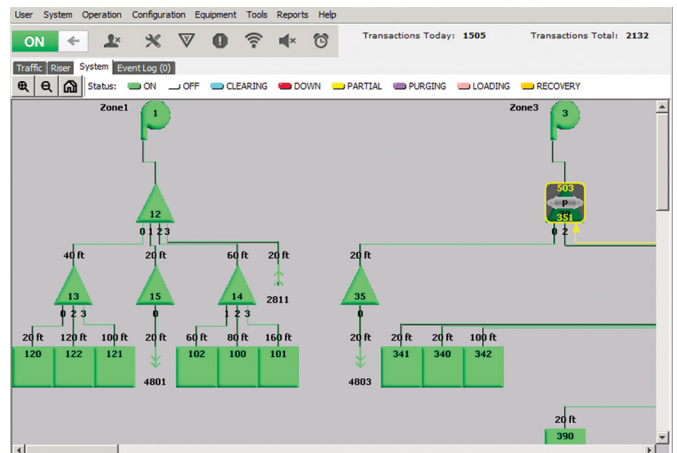


## Nexus™ Software

Nexus System Control Software for the TransLogic PTS is an enterprise-level logistics management solution. Nexus Software is designed for advanced transaction management and processing to meet the needs of the largest and most complex hospital pneumatic tube systems.


### Benefits

- Full tracking and tracing of carriers
- User-friendly interface design
- System scheduling and power management capabilities to reduce facilities operating costs
- Ease of network integration through Ethernet connectivity and virtual server support







 TransLogic  
Nexus Station

Contact Swisslog  
Healthcare to learn more  
about **Nexus** Technology  
Solutions for TransLogic  
Pneumatic Tube Systems.

[healthcare.us@swisslog.com](mailto:healthcare.us@swisslog.com)  
800.764.0300

#### CONTACT

Swisslog Healthcare  
[healthcare.us@swisslog.com](mailto:healthcare.us@swisslog.com)  
800.764.0300  
Canada: 877.294.2831 | 905.629.2400  
[swisslog-healthcare.com/translogic](http://swisslog-healthcare.com/translogic)

Nexus and TransLogic are trademarks and registered trademarks of Swisslog AG. Swisslog Healthcare systems may be covered by one or more patents. See [swisslog-healthcare.com/patents](http://swisslog-healthcare.com/patents) for details.  
© 2019 Swisslog NAM EN 112019 PTS-224

[swisslog-healthcare.com/translogic](http://swisslog-healthcare.com/translogic)

